



AUCTION

LEADING THE INDUSTRY SINCE 1945

Realtors • Auctioneers • Advisors

FRIDAY – MARCH 20, 2020 – 10:30 AM

**JD TRACTOR – QUALITY TILLAGE EQUIPMENT –
CHEVY DURAMAX SERVICE TRUCK – (4) ALUMINUM DUMP
TRAILERS & FLATBED TRAILER – LIME TRUCK –
AIR COMPRESSOR – BACKHOE – OTHER EQUIPMENT**

Absolute auction, all sells to the highest bidders on location:

3740 LYNN RD., CANFIELD, OH 44406

Directions: Take Rt. 46 south of Canfield, Oh or north of Columbiana, OH to W. Western Reserve Rd. and east to Detwiler Rd. and south to Lynn and east to auction site. Watch for KIKO signs.



Tractor – Lime Truck – Service Truck – Backhoe – Wheel Loader:

Clean JD 7800 MFWD full cab 20-8-38 with axle duals, 14 ft. wghts, 19 sp, P.S. triple remote with 2 additional 4,277 hrs quick hitch ser #RW7800P10678 – 2003 Chevy C4500 Duramax diesel auto trans. with 11' Knapheide service bed 135K miles with fuel tank, oil compartments, bumper vise and pintle hitch – 1990 GMC Top Kick 5 & 2 sp. with 427 gas eng. w/ good 12' New Leader 2020 lime box w/ fert/lime chain 114K miles – Ford 750 T.L.B. shuttle shift 5,207 hrs, new injectors pump & radiator, 40" ditch bucket – JD 544-B wheel loader 7300 hrs diesel with hyd. leaks

Dump Trailers – Flatbed Trailer: 1992 Reitnouer 96" W X 45' all alum. flatbed trailer with bulkhead – 1994 Trailstar 32' all alum. dump trailer tandem axle with Aero Easy cover tarp – 1993 Trailstar tri-spread axle all alum. dump with tarp – 1992 East all alum. 30' dump trailer dual tandem axle with Aero easy-cover tarp – 1994 Trailstar dual tandem spread axle with tag 32' all alum.

Quality Tillage – Hay Equipment – Stoltzfus Lime Spreader:

JD 726 21.6" soil finisher – JD 630 14' disc – Brillion X108 18' single roll cultipacker – JD 2700 6-bottom auto reset adj. plow – Stoltzfus 8-ton tandem lime spreader 24" web double spinner – like-new Landoll 13' mod. 875-13D soil finisher – Brillion 14-shank pull type chisel plow – White 271 Rock Flex 18' wing disc – JD 337 sq. baler with wide pick-up pan kicker – Gehl 455 hyd. roll-a-bar hay rake – homemade 10' X 18' kick bale hay wagon – 5' X 20' dolly wheel feed wagon

Air Compressor – Farm Related Items – Fuel Tanks – New Ford & Dodge Tailgates – Bumpers:

Sullair 185 portable air compressor with 4 cyl. JD diesel, 540 hrs – Yokohuma 4500 PSI 16 HP Steam Jenny – commercial Skil and Dewalt rad. arm saws – assorted lumber – picnic table – farm gates – My-D cattle chute – 18.4-46 tires – 500-gal skid tank w/ Fill-rite elec. pump – 1000-gal fuel on skids with Fill-rite pump – JD 518 R rear-tine walk behind rototiller – new QT 66" Tomahawk material bucket – Hensley 24" ditch bucket – Miller Bluestar 6000 welder/generator 13 HP Honda eng. – JD 3 pt. 261 finish mower – St Scott Tarbell Inc. mod 250 FC5 HD stick welder – (8) NIB 2010 Mack chrome front bumpers – (24) 2'X4' florescent lights – (2) new Ford Super Duty tailgates with step – (3) new Dodge tailgates – (1) Chevy tailgate – (10) new Ford/Dodge rear bumpers – 2 pallets of alum. semi steps – 30+ pcs pallet shelving uprights only – alum. trailer aprons

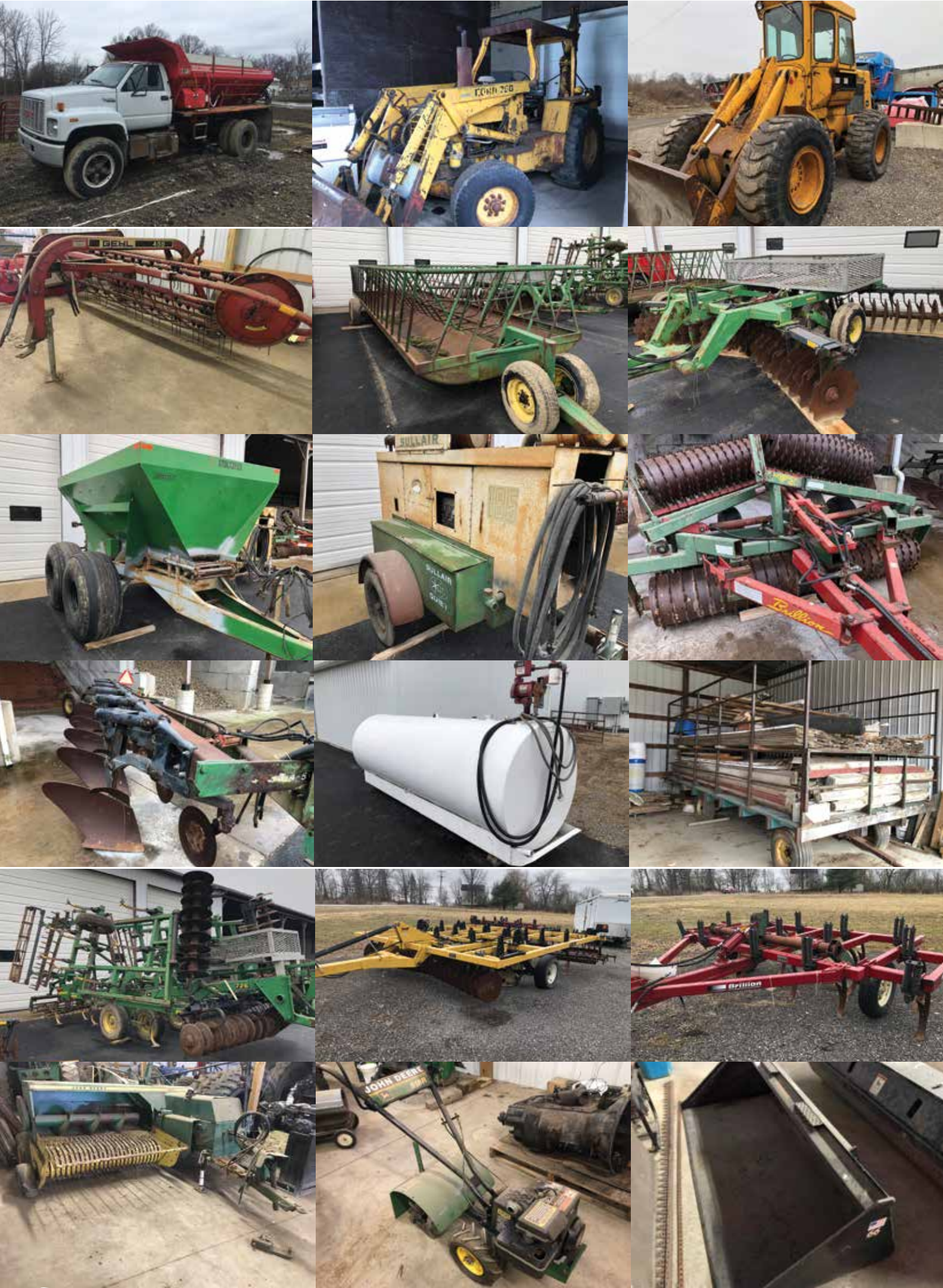
Information is believed to be accurate but not guaranteed. KIKO Auctioneers

800-533-5456 | kikoauctions.com



TERMS ON CHATTELS: Driver's license or State ID required to register for bidder number. Cash, Check, Debit Card, Visa, or Master Card accepted. 4% buyer's premium on all sales; 4% waived for cash or check. Information is believed to be accurate but not guaranteed. Multi Par auction process may be used.

Auction By Order Of: Detweiler Farms





Auctioneer/Realtor®
RANDALL L. KIKO
330-831-0174
randall@kikocompany.com



Auctioneer/Realtor®
DOUGLAS L. MILANO
330-205-2196
dmilano@kikocompany.com